



**AMCO-
GIFFEN**

**DESIGN &
ENGINEERING**

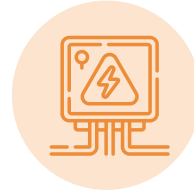
MULTI-DISCIPLINARY AND CROSS-SECTOR DESIGN AND ENGINEERING SERVICES

Our Services at a glance

DESIGN



Civil & Structural



Electrical



Telecoms



Temporary Works

ENGINEERING



**Knowledge
Management**



**Engineering
Assurance**

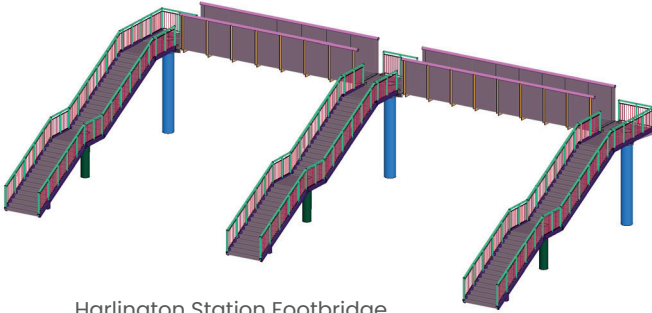


Digital Engineering

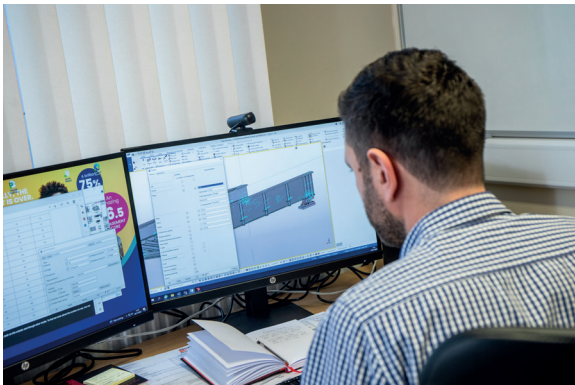
The design and engineering team is led and overseen by Hamish Muir, Design and Engineering Director and supported by Chris Parker, Head of Design and Matt Turlington, Head of Engineering.



Garforth Station Open Beacon Footbridge



Harlington Station Footbridge



Design & Engineering at AmcoGiffen

AmcoGiffen's design and engineering team was established in 2017 and has grown to offer multi-disciplinary, cross-sector support through all project stages from tender support to detailed design and project handback. We provide support to both rail and non-rail operations for AmcoGiffen and other Renew companies.

Providing nationwide coverage, we work closely with our project delivery teams and clients to deliver both simple and complex designs, ranging from minor remedial schemes to full investment and enhancement programmes.

We aim to deliver cost-efficient designs that both challenge and satisfy the design brief to provide the best solution to our client, their customers and other stakeholders.

Our engineering arm brings added value by providing enhanced knowledge management processes, digital engineering and engineering assurance advice and support to the business.

For discipline specific support please contact the individual leads on the following pages or email info@amcogiffen.co.uk

Civil and Structural

Our civil and structural team provides design support for projects ranging in construction value from £100k to over £10m. We have a broad range of expertise and often act as lead designer to coordinate complex multi-disciplinary schemes. Although we specialise in rail, we have experience working in various sectors across AmcoGiffen's operational teams.

We support project teams through the engineering assurance process with competent and qualified individuals acting on behalf of both AmcoGiffen and clients through each stage of the project life cycle.

We've worked on over 1,500 commissions ranging from asset management framework repair schemes to bridge re-constructions and Access for All (AfA) schemes. We tailor our support to your individual project requirements.



Strengthening work at Wakefield Viaduct



Lift installation at Bridlington Station
Access for All Scheme

Key contact:

PETER MULLEN

• CEng MICE

e: peter.mullen@amcogiffen.co.uk



Electrical

Our electrical team undertakes all manner of low-voltage designs for Mechanical and Electrical (M&E) building services and fixed plant, known as E&P, providing national support for various sectors.

We support project teams through the engineering assurance process with competent and qualified individuals acting on behalf of both AmcoGiffen and clients throughout the life cycle of the project.

We specialise in producing construction-ready designs and have worked on over 200 commissions including 'Access for All' schemes, complex lighting designs, EV chargers and lineside plant. We adapt quickly to changing market requirements having recently delivered several EV charge point schemes.

Key contact:

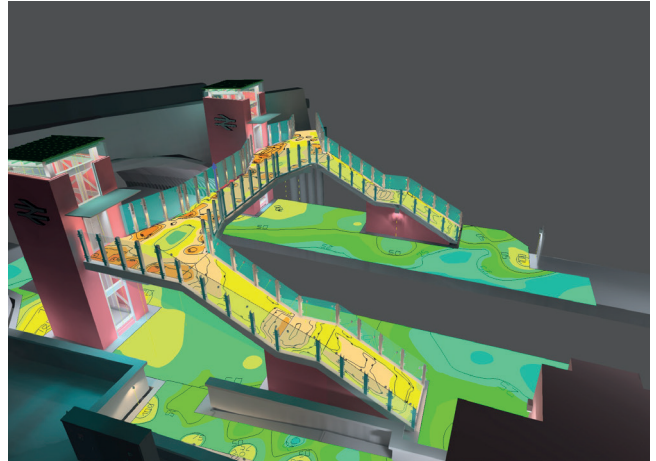
JACK FRENCH

• CEng MIET

e: jack.french@amcogiffen.co.uk



DESIGN



Garforth Station Open Beacon Footbridge
Access for All Lighting Design

Dartford Station EV Charging Points



Telecoms

Formed to support self-delivery of end-to-end design and build projects, our telecoms team helps to provide overall cost savings for clients with the added benefit of progressively assured design, supporting our collaborative and integrated approach.

Since its inception in late 2021, the telecoms team has been commissioned on over 15 complex telecoms designs on over 150 sites, varying in scope from 'Access for All' projects to the extensive Ayrshire LLPA and Scotland CIS renewal programme.

Our capabilities include all telecoms related projects including operational telecommunications, CIS, LLPA, PHP, PAVA* and CCTV design as well as associated copper and fibre cable installations. Highly skilled, we deliver design, installation and testing works with our extensive experience in preparing and carrying out enabling works, consultancy and functional support to clients from inception to construction including construction testing and handback.

Our competent and qualified team can support project teams through the engineering assurance process acting on behalf of both AmcoGiffen and clients during all phases of a project life cycle.



New information Boards at Edinburgh Waverley Station

Key contact:

BRIAN TAZZAR

• MIET

e: brian.tazzar@amcogiffen.co.uk



Temporary Works

Our experienced and knowledgeable team provides a high-quality reactive and planned temporary works design offering. Gaining an outstanding reputation internally and also externally, with clients. The team develops safe and efficient design solutions to enable construction in often challenging conditions

We have worked on over 500 commissions, many with multiple temporary works requirements, and have expanded our temporary works design support to other companies within the Renew group.

We can guide you through a wide variety of challenging schemes and bespoke requirements whenever they arise.

Key contact:

JONOTHAN MACK

• C.Build.E CEng FCABE

e: jonathan.mack@amcogiffen.co.uk



Removing the Existing Footbridge at Garforth Station



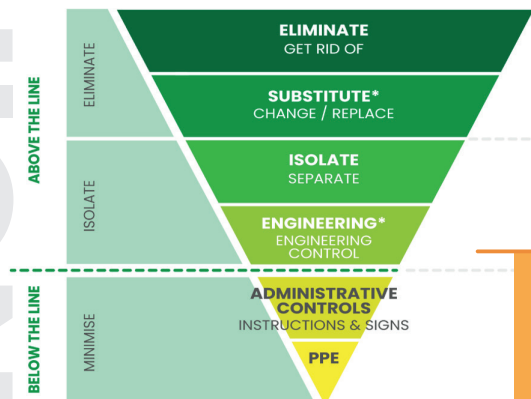
Thoralds Underbridge Propping

Engineering Assurance

Engineering assurance is a core business function that aims to provide confidence that risks are being managed in accordance with objectives, standards and delivery management systems.

Our engineering assurance team ensures that our governance and risk controls are well designed and effectively implemented. This includes providing systems to ensure we are appointing competent engineering resource, managing engineering safety risks, managing our external design supply chain and ensuring our engineering teams are kept up to date with standards.

In addition the team provides support for specialist engineering disciplines such as signalling.



Creating the Right Environment is one of our key Safety, Health, Environment and Quality Strategy Focus Areas



Meir Station Signal Sighting Assessment

Key contact:

BECKY JACKSON

• CEng MICE MCIHT

e: becky.jackson@amcogiffen.co.uk



Digital Engineering

ENGINEERING

Our digital engineering team collects and delivers quality digital data across CAD, surveys and visualisations.

Providing governance, quality assurance processes and support to our colleagues and clients, we ensure maximum value from the collection of survey data through to delivery of CAD models and visualisations.

We deliver several types of surveys including topographical, laser scans, gauging and setting out. We bring maximum efficiency to production of 3D models, drawings and visuals, as well as ensuring survey data integrates seamlessly with CAD activities.

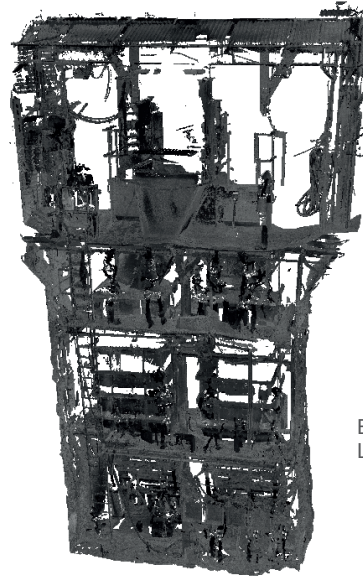
Utilising the latest technology our visualisation expertise can enhance project deliverables, engineering activities and safety briefings, providing benefits to staff and clients at all levels.

Key contact:

ARRON TUCKER

• GMICE

E: arron.tucker@amcogiffen.co.uk



Boulby Mine
Laser Scanning



Plessey Viaduct Render

Knowledge Management

Knowledge Management is the process by which an enterprise gathers, organises, shares and analyses its knowledge in a way that is easily accessible to employees.

Our knowledge management team aims to optimise the knowledge available from our teams and projects. We achieve this through our 'Lessons Learnt' platform, Research and Development Expenditure Credits (RDEC) scheme support and Building Information Management (BIM).

In addition, we provide governance and support on the implementation of BIM on various projects within AmcoGiffen and maintain the company ISO19650 BIM certification as a Lead Appointed Party.



Caerphilly Tunnel - Nanotech Drilling

Key contact:

MATTHEW TURLINGTON

• CEng MICE CMgr FCMI

e: matthew.turlington@amcogiffen.co.uk



Testimonials



Garforth Station Access for All scheme.

The team demonstrated in-depth knowledge, competence and experience in their respective disciplines, delivering this complex application of Network Rail's 'Approval in Principle' standard design. Their attention to detail included developing the structural design and structural details for example re-designing connections to remove hidden critical elements. The team has also been heavily involved in access for all lessons learned to aid other project teams and designers.

Kafui Agbodo – Network Rail, Senior Project Engineer (Buildings)

The Telecoms Design Team has been critical in delivering the recent station information and security system renewal projects throughout Scotland. Their management and collaboration with external service providers, specialist suppliers, subcontractors and internal and external stakeholders have been invaluable.

Iain Mackay – Contracts Manager AmcoGiffen

I have had the pleasure of working with the Design Team on several projects, and I am consistently impressed by their professionalism and expertise. Their broad range of expertise, and excellent communication, provide a seamless and accessible full service, internally and is a key distinction from external suppliers.

Tom McSweeney – Proposals/Estimating Engineer AmcoGiffen

Our design and engineering team provided professional engineering services, proactive communication, and a reliable programme for my project.

Alan Lie – Engineering Manager, AmcoGiffen, Anglia

Electric Vehicle Charge Point installation project at multiple Network Rail sites. From the outset, it was a pleasure working with your team. The entire process, from contract award to the successful delivery of Pace 2-4, was executed with professionalism and efficiency. Your team's proactive approach ensured that the project remained on schedule and that all deliverables were met to our satisfaction.



Ian Oakley – Network Rail, Scheme Project Manager



AMCO·GIFFEN

W: amcogiffen.co.uk | E: info@amcogiffen.co.uk